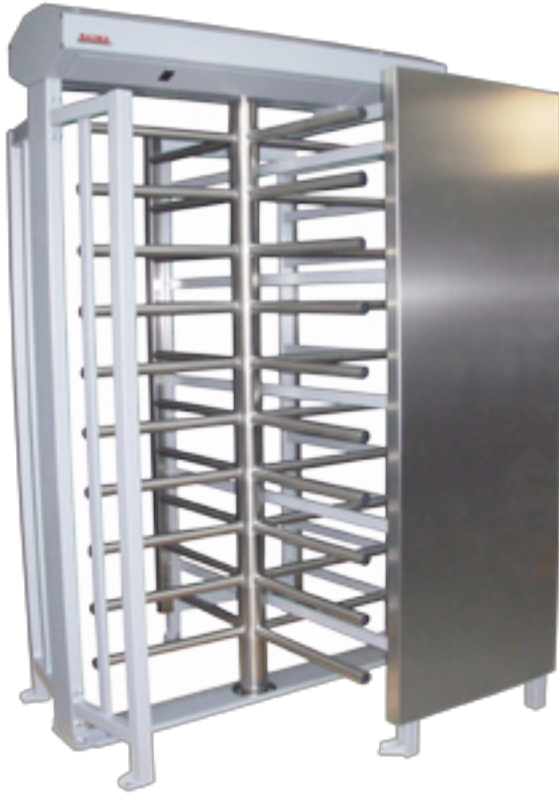


**FULL HEIGHT
REVOLVING TURNSTILE**

The TR 128 is a full height revolving turnstile that creates an obstruction which can not be breached. It was created to allow the passage of a single person, one at a time, and it is particularly indicated for managing higher flow capacities for use in arenas and stadiums.

It has a robust structure, constructed completely in painted, galvanized steel. The unit is integrated by a stainless steel four-section rotor that is specially designed to move in a way that resists against high levels of mechanical stress.

Technical Features

- Predisposition for insertion of recognition systems such as badge readers, ticket readers, or to recognize the proximity of hands, etc.
- Emergency function with free rotation in any direction
- Lighted LED indicators (optional)
- Command Console (optional)
- Completely finished in stainless steel AISI 304/316 (optional)
- Steel or glass covering with courtesy lighting (optional)



Electrical System

Feed: 220V+/- 10%, 50 Hz.

Max. Absorbed power: 70W

Functioning temperature: -20°C/ 70°C

Humidity: 90%

Shock absorber: hydraulic adjustable

Structure:

Chassis: Side walls constructed using tubes of carbon-galvanized steel, cross made in stainless steel AISI 304 or 316.

Functions and Operations

Degree of protection: IP44.

Weight

300 Kg

**FULL HEIGHT
REVOLVING TURNSTILE****Technical Features**