



Discover the ideal solution with **record**, your partner in door automation

Drive technology for pedestrian entrances and industrial applications

- > Automatic sliding doors, linear, curved, angular, reinforced, airtight, 1 or 2 leaves
- > Swinging
- > Folding
- > Telescopic
- > Revolving doors
- > High speed gates
- > Range of sensors

Security

Protection of People

- > Fire-proof sliding doors
- > Smoke-resistant doors
- > Doors for emergency exits

Protection of buildings

- > Burglar-resistant safety doors
- > Safety doors and interlocks for controlled passage
- > "one-way" corridors
- > Security doors

Centralised monitoring

- > Door management system for building access control
- > Alarm system and diagnostics
- > Interfaces

Maintenance

Tailored advice

- > Customised advice
- > Professional engineering
- > Maintenance of all automatic doors
- > Troubleshooting hot-line
- > Renovation
- > Remote control maintenance

Special solutions

- > Door systems for specific applications



● **Headquarters**

> agta record ltd - Allmendstrasse 24 - CH-8320 Fehraltorf

Tel. + 41 44 954 91 91 - Fax + 41 44 954 92 00 - e-mail : info@agta-record.com



www.agta-record.com



your global partner for entrance solutions



Automatic telescopic sliding door **record 16 TSA**



The elegant solution !



record

your global partner for entrance solutions



Automatic telescopic sliding door record 16 TSA

The optimized opening width

4 (D-TSA) or 2 (E-TSA) door leaves open and close in an elegant and noiseless movement and at different, harmoniously coordinated speeds. This interesting motion is not only aesthetically pleasing but also functional. The telescopic sliding door operator **record 16 TSA** is ideal for narrow passages where the opening width obtained with a normal sliding door would not be sufficient. Crowded entrances are no problem to the **record 16 TSA** as it opens quickly and quietly. The power transmission between the carriages of the slow and fast moving door leaves is

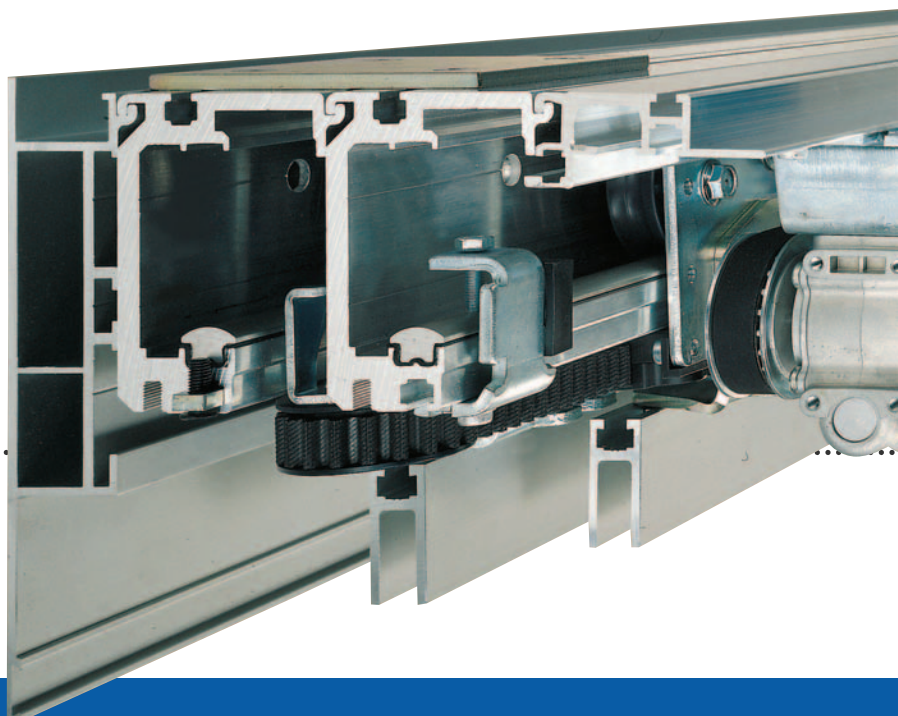


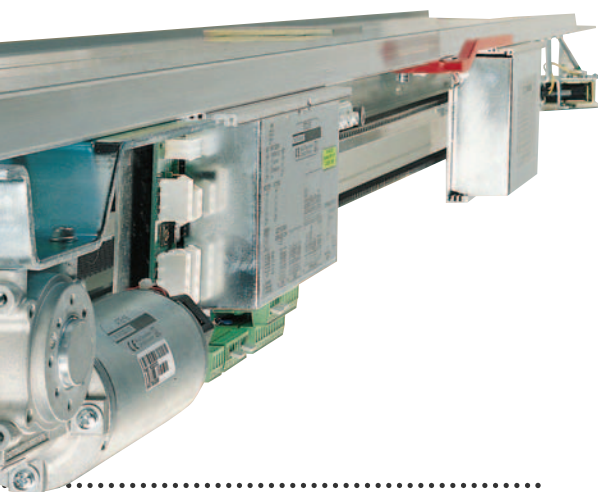
achieved without drive by 2 guide pulleys - an additional advantage for the noiseless movement of the door leaves.

The telescopic sliding door **record 16 TSA** is part of the modular record system 16 and consists of the basic operator record 16 STA and the additional module **record 16 TSA**.

**Automatic door technology
as you've never seen it before !**

always safe





Technical data

Clear opening width A

D-TSA 1200 - 4'000 mm

E-TSA 800 - 3'000 mm

Clear height of passage G

recommended maximum height 3'000 mm

Maximum weight of door leaves

for record 16 TSA

D-TSA 4 x 80 kg

E-TSA 2 x 130 kg

for record 16 TSA DUO (heavy door leaves)

D-TSA 4 x 130 kg

E-TSA 2 x 170 kg

Operator dimensions, incl. casing

height 200 mm

depth 225 mm

Opening speed (1)

D-TSA 0.7 m in 1.0 sec.

E-TSA 0.7 m in 1.5 sec.

Electrical connection data

mains voltage 230 V, 50 / 60 Hz

rated power 0,6 A

rated capacity 100 W

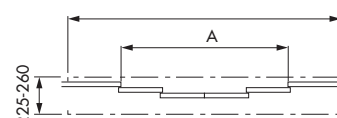
rated capacity standby mode (door shut) 14 W

fuse protection min. 2,5 A slow

(1) if door leaf weight equals 75 % of permissible maximum weight

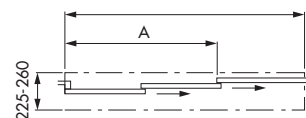
Telescopic sliding door, 4 door leaves (D-TSA)

if $A \geq 1320$: $F = 1,5A + 200$
if $A \leq 1319$: $F = 2180$



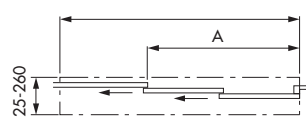
Telescopic sliding door, 2 door leaves (E-TSA)

if $A \geq 1050$: $F = 1,5A + 100$
if $A \leq 1049$: $F = 1650$

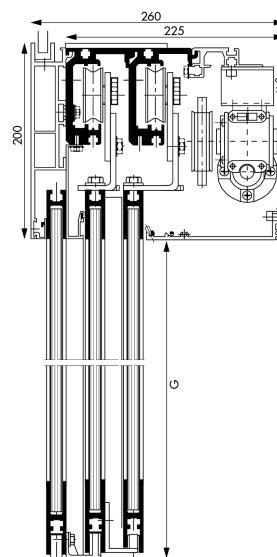


opening to the right

if $A \geq 1050$: $F = 1,5A + 100$
if $A \leq 1049$: $F = 1650$



opening to the left



A: clear opening width
G: clear height of passage
F: length of header

always reliable

